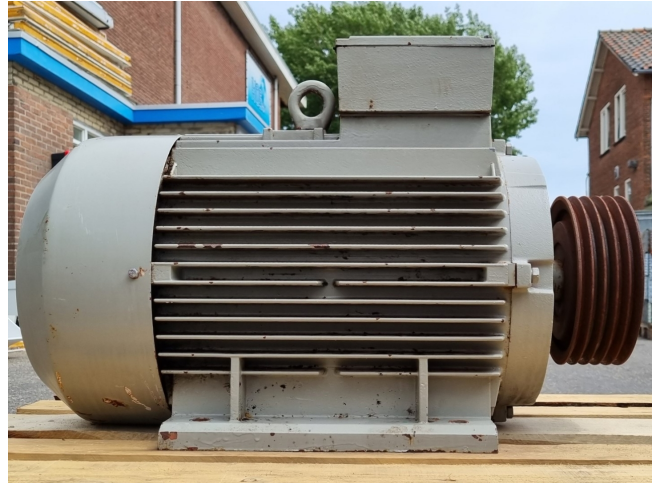


Rotor XC200LK04

Specifications

Merk	Rotor
Type	XC200LK04
kW	30
RPM	1465
Size & Weight	760x430x500 mm (LxWxH) & 255 kg
50 Hz / 60 Hz	50 Hz
Stock	1



Description

Used Rotor XC200LK04

Gebruikte Rotor XC200LK04 elektromotor met de volgende specificaties: 50 Hz - 30 kW - 1465 RPM.

